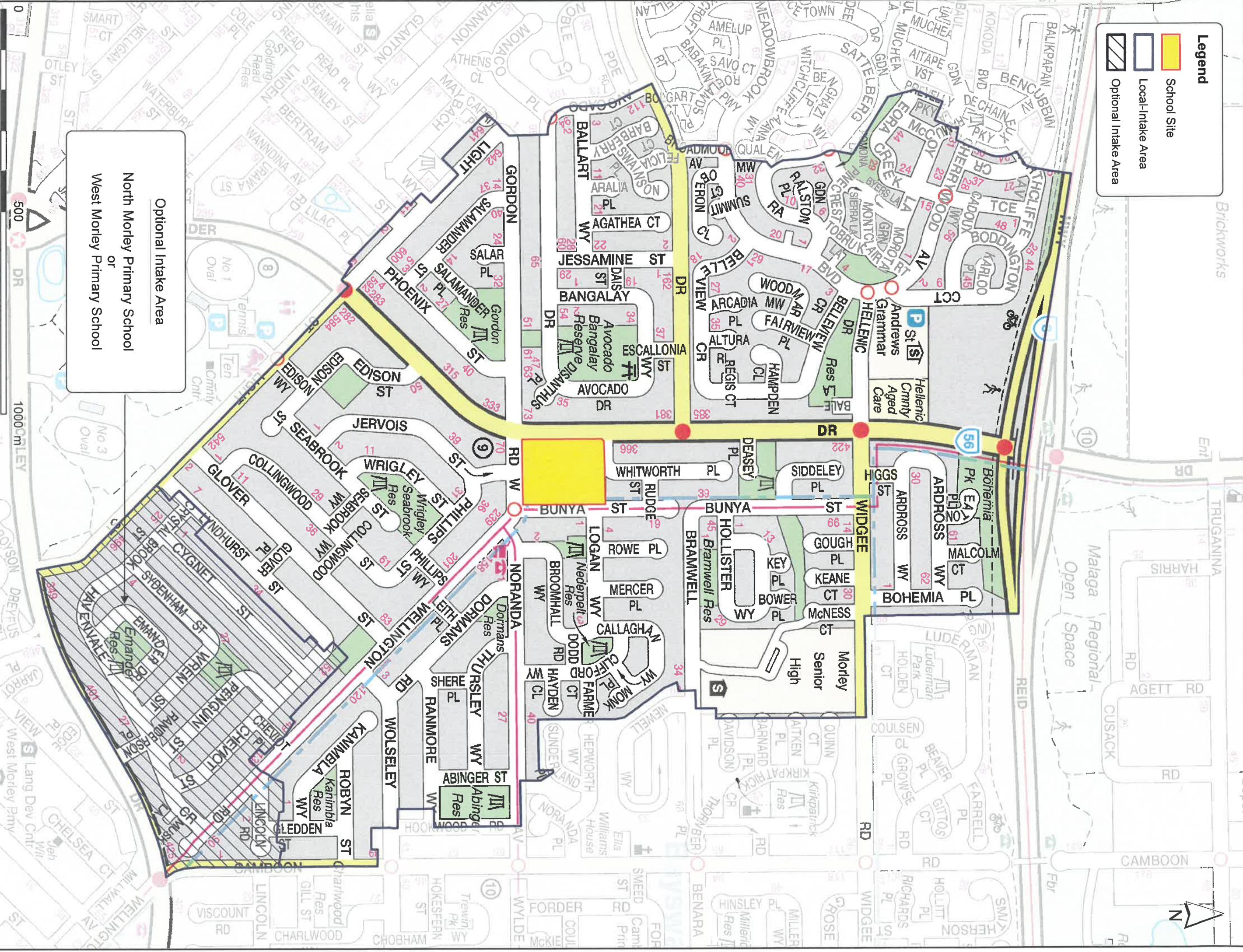


Legend

- School Site
- Local-Intake Area
- Optional Intake Area



Optional Intake Area
North Morley Primary School
or
West Morley Primary School

This map is based on a written description of the local-intake area (LIA) for the school as published in the WA Government Gazette. Although the map closely represents the LIA description, for some houses near the boundary (especially on street corners), it may be necessary to refer to the written description. The street address of a residence is used to determine whether that dwelling is inside a particular LIA. The LIA description can be found in the Schools Online on the Department of Education website. While local-intake areas for most schools do not change from year to year, changes are made to local-intake areas as required. Such changes are published in the 'WA Government Gazette' (usually in a December issue) and subsequently this map will be updated. For any enquiries contact Department of Education.

Map created: 16/09/2019 by Asset Planning and Services Branch, Department of Education WA
S:\7352\Asset Services\APSD\DOE GIS\PROJECTS\2019\WMA\One-Of-NORTH MORLEY PRIMARY SCHOOL Planned 2020.mxd

NORTH MORLEY PRIMARY SCHOOL
SCHOOL CODE - 5522

Local-Intake Area boundary published August 2019



Department of Education